

# *Sagee Manor*

## OFFERINGS

### 21.4-ACRE MOUNTAINTOP WITH PANORAMIC VIEWS OFFERED FOR \$10.9 MILLION

#### SAGEE MANOR ESTATE ON 10.2 ACRES, INCLUDING:

- *Main House with 4 Bedrooms, 4 Full and 4 Half Baths, Two Offices, Sleeping Porch and 7 Fireplaces*
- *Post & Beam Dining Pavilion with Dual Fireplaces*
- *Guest House with 3 Bedrooms, 3 Full Baths, Fireplace, Porch and Full Kitchen*
- *Numerous Gardens (Cutting, Herb, Vegetable, etc.) with Potting Shed*
- *Pool Pavilion with Full Bath, Heated Pool and Spa*
- *Croquet Court Surrounded by Boxwood Hedge and Antique Stone Niches*
- *Stone Roundel Pavilion with views into South Carolina*
- *Upper Meadow, Woodlands, Rare Native Plants and Trails*
- *Site Available for Helipad*

#### SHARED OWNERSHIP OF 11.2 ACRES, INCLUDING:

- *Three Sets of Stone Gates and 1/3-mile Landscaped Entrance Drive*
- *Two Story Native Stone Overlook*
- *Rock Garden, Lower Meadow, Pond and Pond House*
- *Extensive Woodlands, Rare Native Plants and Trails*
- *Equipment Buildings with Property Manager Office*



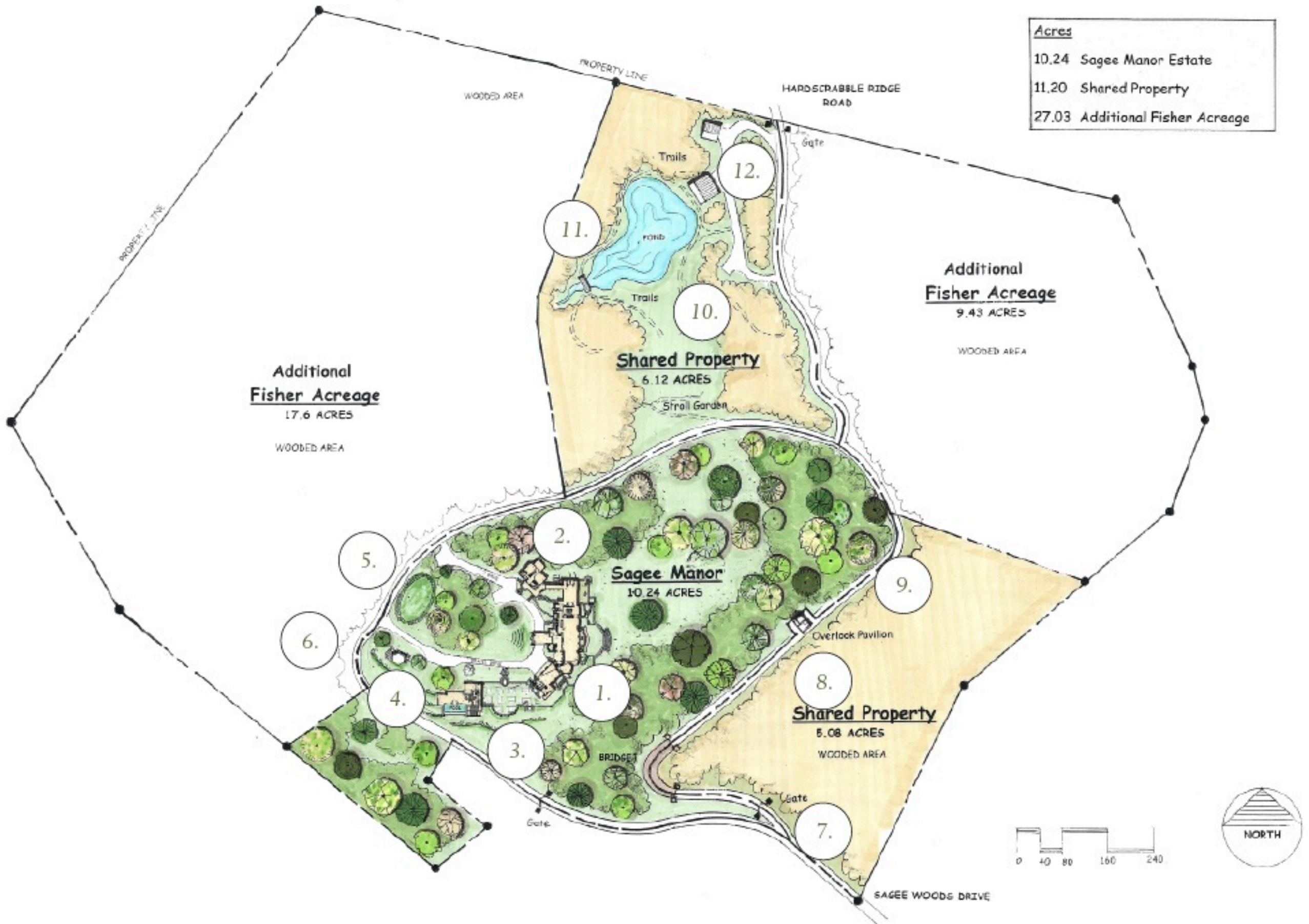
### ENTIRE 48.4-ACRE MOUNTAINTOP OFFERED FOR \$17.9 MILLION

*All previously described property plus*

- *26 pristine acres comprising entire mountaintop; suitable for future development if desired (site plan available)*
- *360-degree panoramic views*



# ENTIRE MOUNTAINTOP AVAILABLE: 48.4 ACRES







### FULL OWNERSHIP FEATURES (ABOVE IMAGES)

1. Main House with Dining Pavilion
2. Guest House
3. Pool Pavilion, Heated Pool & Spa
4. Cutting, Herb & Vegetable Gardens
5. Croquet Court
6. Roundel Viewing Pavilion with Fireplace.

### SHARED OWNERSHIP FEATURES (BELOW IMAGES)

7. Main Entrance Gate
8. Native Stone Overlook
9. Landscaped Entry Drive (1/3 Mile)
10. Rock Garden & Lower Meadow
11. Pond with Native Plant Trails
12. Pond House/Equipment Building with Property Manager Office.

